

# What If the Universe Could Feel?

---

A SCULPTURAL EXPLORATION  
OF CONSCIOUSNESS, EMOTION,  
AND COSMIC CONNECTION.

A SCULPTURE BY  
CRISTIAN ARMENTA

---





***An encounter between wonder and consciousness.***

# What If The Universe Could Feel?

*What If the Universe Could Feel?* is a sculptural meditation on the relationship between human consciousness and the cosmos. Through the image of a small figure offering a heart to a vast celestial presence, the work proposes emotion as a possible bridge between individual consciousness and a larger cosmic awareness.

Balancing intimacy and scale, vulnerability and wonder, the installation invites viewers to consider emotion as a universal language capable of connecting the personal with the infinite.

# What If The Universe Could Feel?

## *Curatorial Context*

Contemporary culture often treats emotion as a private and deeply personal experience. *What If the Universe Could Feel?* proposes an alternative perspective: that emotions may function as points of connection between the individual and a larger field of existence.

The installation brings together architectural forms, cosmic imagery, and symbolic figuration to create a space where intimacy and vastness coexist. A solitary figure extends a heart toward an unseen presence, transforming a familiar gesture into a reflection on communication, awareness, and belonging. Rather than depicting a narrative, the work establishes a condition of encounter—between the finite and the infinite, the known and the unknowable.

The spiraling structures evoke orbital movement, expanding perception, and systems that extend beyond direct observation. Within this environment, the heart becomes more than a symbol of affection; it emerges as a vessel of meaning, curiosity, and human longing.

Positioned between contemplation and speculation, the work invites viewers to consider whether consciousness is not solely something we possess, but something we participate in. Through this lens, emotion becomes a bridge—linking personal experience to a broader cosmic imagination.



**What if the universe could feel?**  
Monumental Edition 305 cm/ 10 ft.



**What if the universe could feel?**  
Hospitality Edition 150 cm/ 5 ft.



**What if the universe could feel?**  
Collector Edition 80 cm./ 2.6 ft..

# **Edition & Specifications**

## **Editions**

- **80 cm/ 2.6 ft.** - Edition of 10 + 2 Artist Proofs (AP)
- **100 cm/ 3.28 ft.** - Edition of 10 + 2 Artist Proofs (AP)
- Available in custom monumental scales up to 2 meters (79 in) upon request.

## **Materials**

- Cast resin, automotive-grade lacquer, hand-finished surfaces, archival pigments.

## **Authenticity**

- Includes a signed Certificate of Authenticity.
- Signed by the artist.
- Accompanied by the artwork's curatorial statement and artistic rationale.

# Cristian Armenta

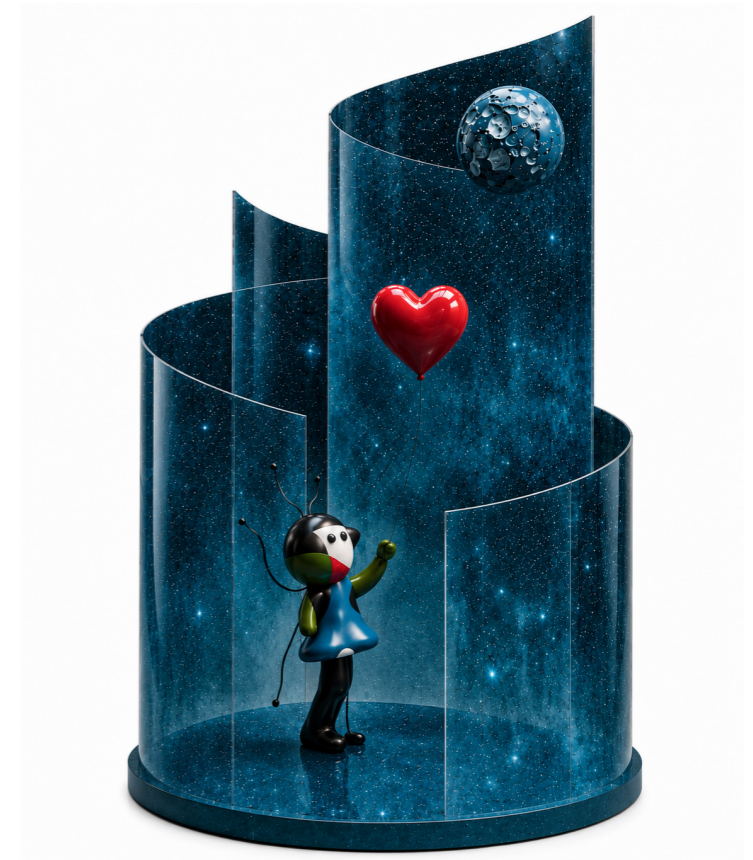
Cristian Armenta creates sculptural works that explore the relationship between emotion, consciousness, and human perception. Through symbolic forms and immersive environments, his practice investigates how personal experience can connect to larger questions of existence, belonging, and collective meaning.



# Acquisition & Commissions

**For inquiries regarding acquisition, edition availability, and shipping arrangements, please contact:**

**Cristian Armenta**  
+52 55 6325 1050  
aa.cristian@me.com  
Mazatlán, Mexico



***Available for private collections, hospitality projects, and site-specific commissions.***